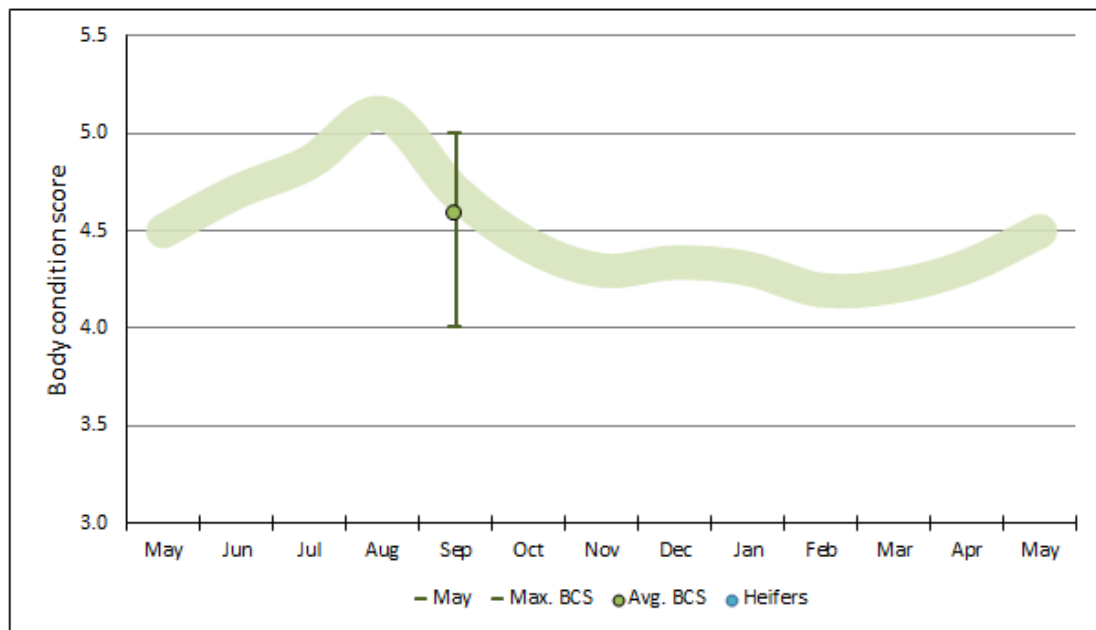


Report by: Berni Saldias
027 235 9731
bsaldias@farmright.co.nz

Report for: LUDF
Date: 26th September 2024
Visit Date: 25th September 2024

	25 th September 2024 CURRENT
Total cows on farm	546
Cows Milkers	531
Penicillin / colostrum	15
Springer/MT,CO cows	20 springers
Milk solids: per day	1079 kgMS
per cow	2.05 kgMS/cow
per ha	6.74 kgMS/ha
Somatic cell count	123,000
Average pasture cover	2373 kgDM/ha
Pre-grazing covers	3356 kgDM/ha
Post-grazing covers	1600 kgDM/ha
Effective area in round	160 ha
Stocking rate	3.41 cows/ha

The average condition score of the herd is 4.6 C.S. (0 C.S. last visit)
with 0% below 4.0 C.S. (0% last visit):



Herd	Average	Number	3	3.5	4	4.5	5	5.5	6
Total	4.6	531	0%	0%	10%	63%	27%	0%	0%
Milkers	4.6	531	0%	0%	10%	63%	27%	0%	0%

Cows and Mating

- 40 cows were scored in the paddock during the pasture walk.
- The average body condition was 4.6.
 - A cow scored at 3.5 condition, was excluded from the above average.
- Consider having any non-cycling (>42 days calved) light cow in the OAD to remove the pressure of being in the main herd.
- PSM dates are:
 - 16th October for the heifers
 - 23rd October for the milking herd
- The industry target aims to have at least 85% of the herd (476 cows) cycle by the planned start of mating. This equates to 23 cows per day from 21 days before the PSM.

Pasture

- The first round finished on the 21st of September.
- The current round length is 29 days based on 160ha effective area at 5.5ha/day.
- Current grass demand is 61kgDM/ha/day.
- Recent growth rate was 48kgDM/ha/day.
- Look to hold the current allocation for a couple of days and start slowly opening the allocation up.
- Use growth rates over 50-55 kgDM/ha/day as a trigger point to aim for a grazing rotation of about 23-22 days.
- Area allocation and pre-grazing targets for 23-day rotation on 160ha.

		Total Diet		19 kgDM			
Post-grazing		1550 kgDM/ha		Round length		23 days	
						Area 160 ha	
Herd	Cows	Pre-grazing target	Area in round	kgDM/cow offered	Supplement offered -kgDM/cow	ha/day	m ² /cow /day
1st Herd	531	3,096	150 ha	19.0	0.0	6.5	123
OAD	20	3,096	6 ha	19.0	0.0	0.2	123
Sick/lame cows	15	3,096	4 ha	19.0	0.0	0.2	123
Total	566			19.0	0.0	7.0	

- Grass demand will be 67kgDM/ha/day.
- Area allocation and pre-grazing targets for 22-day rotation on 152.5ha (160ha effective less 7.5ha for regrassing).

		Total Diet		19.5 kgDM			
Post-grazing		1550 kgDM/ha		Round length		22 days	
						Area 153 ha	
Herd	Cows	Pre-grazing target	Area in round	kgDM/cow offered	Supplement offered -kgDM/cow	ha/day	m ² /cow /day
1st Herd	531	3,142	143 ha	19.5	0.0	6.5	122
OAD	20	3,142	5 ha	19.5	0.0	0.2	122
Sick/lame cows	15	3,142	4 ha	19.5	0.0	0.2	122
Total	566			19.5	0.0	6.9	

- Grass demand will be 72kgDM/ha/day.
- Covers above this will be surplus.

- If pre-grazing covers are below target, offer silage rather than speeding up the rotation length. Supplement should be offered to ensure the cows always leave the targeted post-grazing residuals. It is important that the cows are on a rising plane of nutrition leading into mating and are not being held too tight for feed.

Regrassing and Cropping

- Paddock S6 will be regressed this season.

Nitrogen / fertiliser

- As per the farm plan.

Any queries about this report or other issues please contact me.

Next scheduled visit: Tuesday 22nd October at 9.00am.

Regards,

Berni Saldias

FarmRight Limited Consultant